

INTERNATIONAL SCHOOL



Washington State

PTA

Award Winner

GOLD

Outstanding E-blast

2018 - 2019

*Serving International School in the Bellevue School District
ISPTSA 2.3.121 - 445 128th Ave SE Bellevue, WA 98005*

**WELCOME TO
IS PTSA GENERAL ASSEMBLY
OCTOBER 28TH 2020**

**WE WILL START AT 7:05PM
TO ALLOW MEMBERS TO JOIN IN**

INTERNATIONAL SCHOOL



ONLINE MEETING EXPECTATIONS

1. Please log in with your PTSA registered Member's name.
Your comments and votes will not be counted otherwise
2. Please keep yourself muted, unless you are presenting a topic
3. Please submit your questions and votes through chat

WELCOME — YOU ARE IN GREAT COMPANY

We are the #2 Best High School in the state of Washington, #75 in the nation



AGENDA

1. Board Introduction

2. Welcome Principal Russell

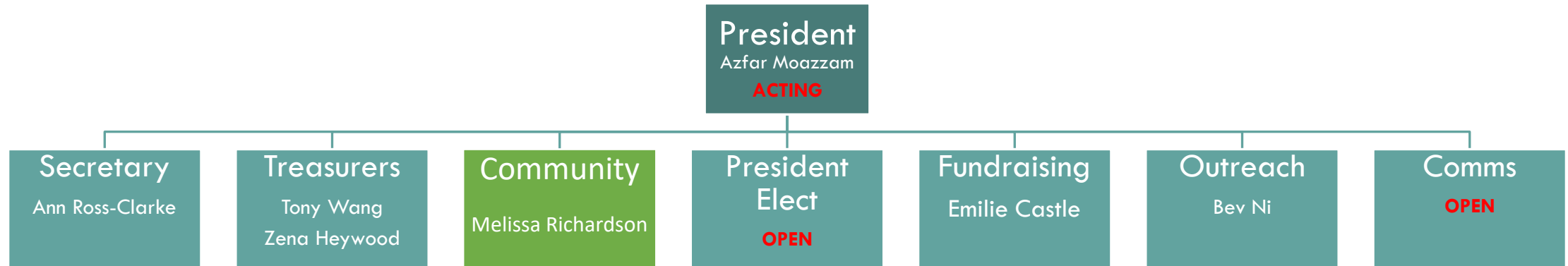
3. PTSA Business

- Review/Approve minutes from June 2020 GA
- Standing Rules Approval
- Budget Review & Approval
- Insurance Announcement

4. Committee Updates

5. PTSA Survey Results and Plans Forward

WE ARE PARENTS, TEACHERS, STUDENTS



www.isptsa.org

Email: EC@isptsa.org

Email: board@isptsa.org

<http://isptsa.org/Page/Pta/BoardMembers>

<http://isptsa.org/Page/Pta/Committees>

Committees

Memberships – Meribeth

Grants – **OPEN**

Monday Messenger – **OPEN**

Web Master – Li Zhang

... many more opportunities

<http://isptsa.org/Page/Pta/HowYouCanHelp>

STRONGER COMMUNITY WITH PTSA

“To create and foster opportunities that enrich and support International School students, staff, parents and community”

Inspire

- Support and/or provide meaningful programs for IS students, parents, staff and community
- Be purposeful in PTSA Fundraising
- Promote mission and spirit of International School

Inform

- Improve communications about ISPTSA meetings, programs, grants and advocacy issues
- Advocate within and beyond IS community to support International School mission and public education in general

Include

- Make it easier to engage in PTSA programs and activities
- Create opportunities to foster social connections and cultural awareness
- Promote and maintain membership so that every student is represented and supported by an ISPTSA member

SO WHAT DOES ISPTSA DO?

We are parents, students, teachers, staff and community members coming together for International School Community

CURRICULUM ENRICHMENT

Math/Science/French/PE
Orchestra/Band/Choir/Music Trips
Art/Library/Health
Teacher Training/Conferences/Tutoring

COMMUNITY BUILDING

Senior Board Judges/Advisors Luncheon
Staff Appreciation/Community Events
Scholarships/Parent Education

STUDENT ACTIVITIES & SUPPORT

Scholarships
6th Grade & HS Retreats
Computer Club/Math Competition/Geobee
Reflections Art Program/Drama/HS Play
Graduation/YES Counselor

COMMUNICATION

Digital Newsletter
Website/Directory Spot



INTERNATIONAL SCHOOL

Principal Update

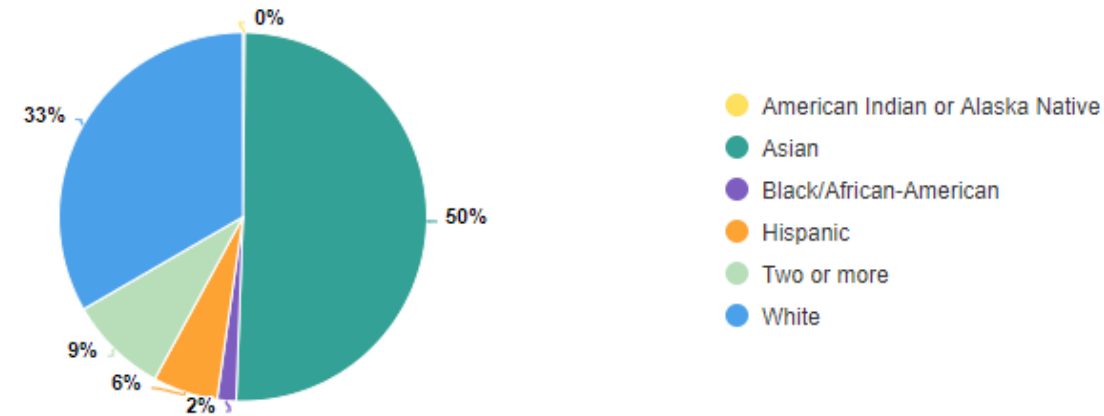
October, 2020

International Enrollment

- Current Enrollment: 590 students
- Hybrid students are split evenly between houses (236 / 238)
- 116 Virtual-Only students (19.6%)

What percentage of our students belong to certain racial groups?

The percentage of students by racial subgroup.



Schedule Transitions

- Aligned schedule with high schools rather than middle schools
- Prioritized IS virtual-only classes to middle school and IS-unique curriculum
- Minimized loss of International staff
- Created the increased capacity for IS students to remain with IS teachers through the use of combined hybrid & virtual students

Shifting Professional Learning

- Designing the learning management system to make distance learning better
- Consistency of “The Big 3” across classrooms for students and families
- Designing lessons with **equity** (Culturally Responsive Teaching), **social-emotional learning** (CASEL), and **accessibility** (Universally Designed Instruction)
- Grading practices



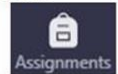
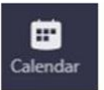
ONLINE LEARNING

Designing Your LMS to Make Distance Learning Better

Intentionally setting up a learning management system where everything students need is easy to access can help them all be successful.



1. **General Channel** for Daily/Weekly Announcements
2. Teams Meetings Scheduled on **Student Calendar**
3. Teams **Assignments** to indicate work you intend to collect and review



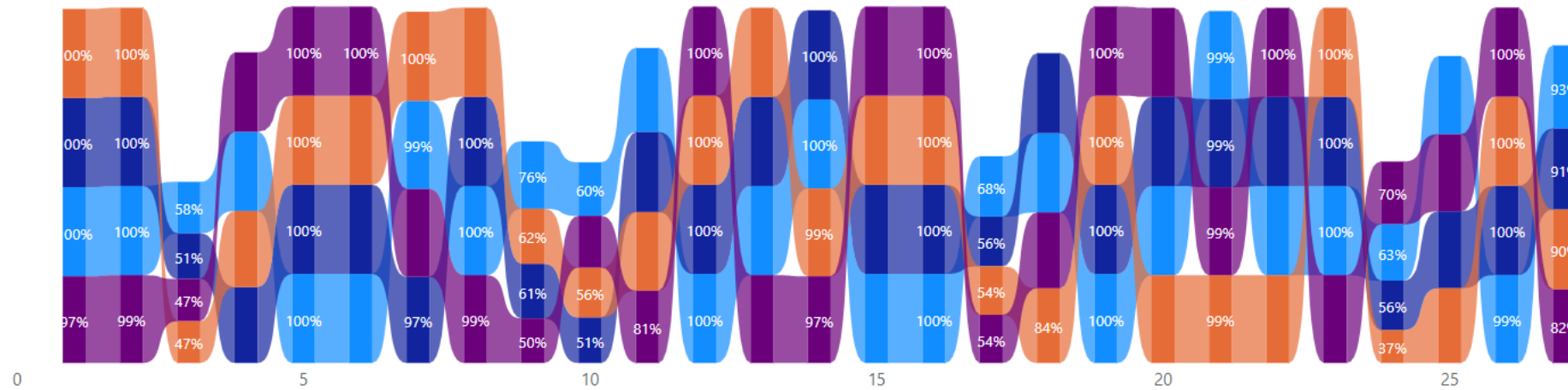
WELCOMING ACTIVITIES • Greeting for Inclusion

ENGAGING PRACTICES • Attentive Listening

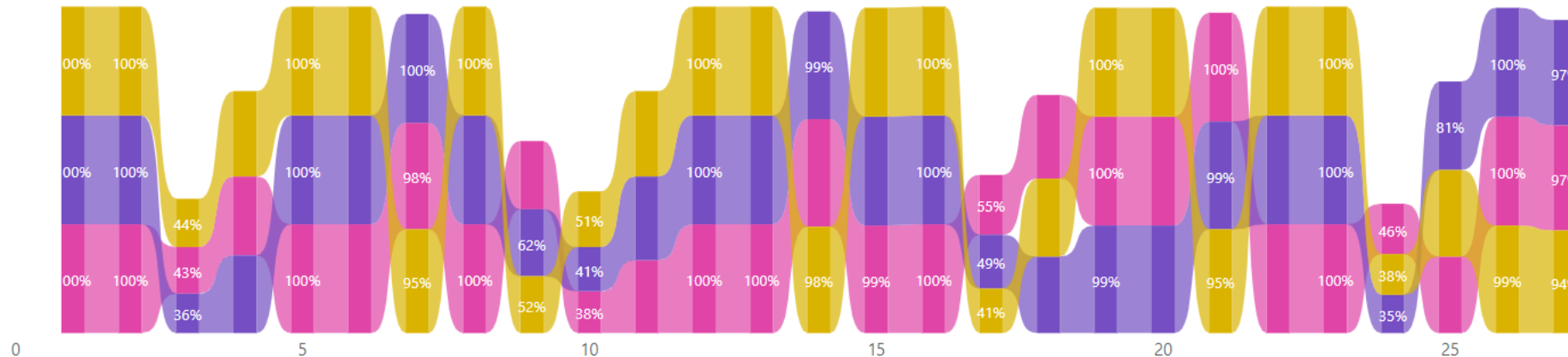
OPTIMISTIC CLOSURES • Reflections and Looking Forward

International Students are Engaging in the Learning

● 09 ● 10 ● 11 ● 12



● 06 ● 07 ● 08



FYI...

International has the highest percentage of engagement of ANY BSD secondary school every day in October

(except for one Saturday when we trailed the top school by 1%)

Maintaining the Rhythm of International

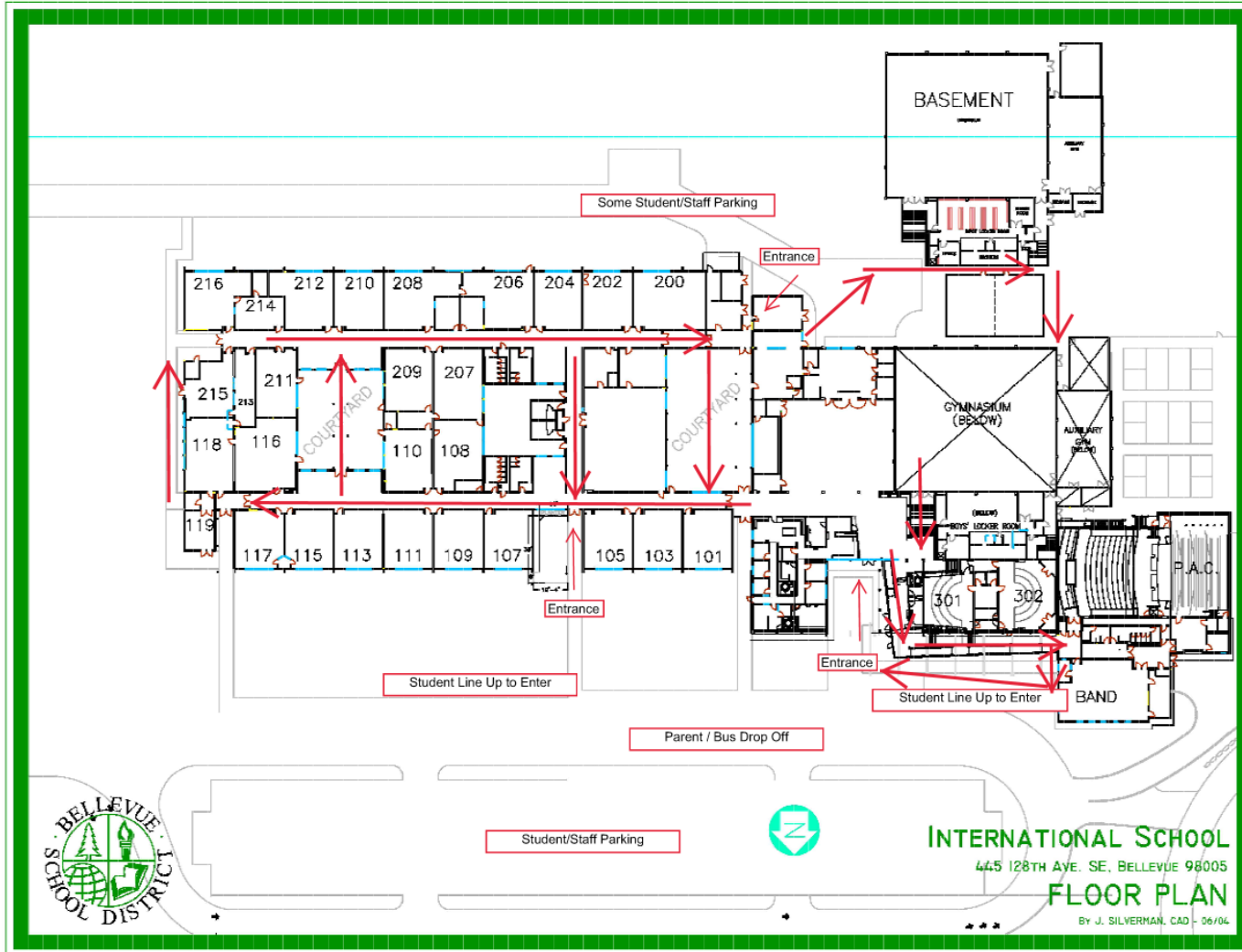
- High quality instruction continues
- Student activities and Club Fair
- Assemblies (*463 unique attendants for our Welcome Back Assembly*)
- Unity Day and Spirit Week
- Support for the college admittance process
- AP Registration
- Student Supports

Transition to Hybrid

- Staff have received initial training
- Assignment of building leads:
 - *School COVID-19 Coordinator/Site Supervisor*
 - *Building Screening Lead*
 - *Building Infection Control Lead*
 - *COVID-19 Isolation Supervisor*
 - *Building Screeners*
 - *Attestation Specialists*
 - *Family Contact Lead*



Preparing for Hybrid:
Classrooms



Preparing for
Hybrid:
Transitions

Return to Hybrid: Future Problem- Solving and Implications

- Drop-off and after school practices will change
- Transportation shifts
- Lunches will shift
- Concerns about Hybrid/Virtual combined classes



Future Opportunities

- Identifying strengths from the current virtual model to maintain and transform when we return to a traditional model (*adaptive change*)
- An opportunity to re-imagine International as a Choice School

PTSA BUSINESS

- Review/Approve minutes from June 2020 GA
 - <https://isptsa.org/Doc/Public/General Membership Meeting Minutes 200618.pdf>
- Standing Rules Approval
 - <https://isptsa.org/Doc/Public/ISPTSA Standing Rules 2020-2021.pdf>
- Acknowledgement of Insurance
- Budget Review & Approval

2019-2020 BUDGET REVIEW - TONY

Financial Overview							
Budget Heading	Actual			Budget			More/-Less
	In	Out	Net	In	Out	Net	
A) CONTRIBUTIONS	\$60,937.01	-\$212.24	\$60,724.77	\$95,500.00	-\$200.00	\$95,300.00	-\$34,575.23
B) FEES & PROGRAMS	\$11,925.15	-\$2,996.26	\$8,928.89	\$10,500.00	-	\$10,500.00	-\$1,571.11
C) OTHER REVENUE	\$1,169.41	-	\$1,169.41	\$1,500.00	-	\$1,500.00	-\$330.59
D) ADMINISTRATIVE	-	-\$6,850.91	-\$6,850.91	-	-\$20,050.00	-\$20,050.00	\$13,199.09
E) MEMBERSHIP BLDG EVENTS & PYMT	-	-\$8,031.55	-\$8,031.55	-	-\$9,550.00	-\$9,550.00	\$1,518.45
F) DONATIONS	-	-\$1,000.00	-\$1,000.00	-	-\$1,200.00	-\$1,200.00	\$200.00
G) Departmental Requests	-	-\$10,263.30	-\$10,263.30	-	-\$18,505.00	-\$18,505.00	\$8,241.70
H) RECURRING PROGRAMS	-	-\$36,199.25	-\$36,199.25	-	-\$51,095.00	-\$51,095.00	\$14,895.75
I) PRIOR YEAR EXPENSES	-	-\$1,850.00	-\$1,850.00	-	-\$2,900.00	-\$2,900.00	\$1,050.00
J) DESIGNATED FUNDS	-	-	-	-	-\$2,000.00	-\$2,000.00	\$2,000.00
K) SCHOLARSHIPS	-	-	-	-	-\$2,000.00	-\$2,000.00	\$2,000.00
Total	\$74,031.57	-\$67,403.51	\$6,628.06	\$107,500.00	-\$107,500.00	-	\$6,628.06

BUDGET REVIEW - TONY

- Income greatly impacted by covid-19 due to cancellation of spring social fund-raising event
- Still managed to a balanced budget for last school year
- Reducing our spending this year and using savings (\$14.5k) to cover the difference
- Funding programs for enhancing online learning
- Changes to note:
 - World Language Intern and 6th grade/HS retreat cost reallocated
 - \$4k budgeted for GoFormative to assist in online learning
- See at our website - <https://isptsa.org/Doc/Documents 2020-21/ISPTSA Budget Report October-2020.pdf>

2020-21 BUDGET - TONY

Budget Heading	Actual			Budget			More/-Less
	In	Out	Net	In	Out	Net	
A) CONTRIBUTIONS	-	-	-	\$77,000.00	-	\$77,000.00	-\$77,000.00
B) FEES & PROGRAMS	-	-	-	\$9,000.00	-	\$9,000.00	-\$9,000.00
C) OTHER REVENUE	-	-	-	-	-	-	-
D) ADMINISTRATIVE	-	-\$1,233.35	-\$1,233.35	-	-\$21,280.00	-\$21,280.00	\$20,046.65
E) MEMBERSHIP BLDG EVENTS & PYMT	-	-\$47.30	-\$47.30	-	-\$10,500.00	-\$10,500.00	\$10,452.70
F) DONATIONS	-	-	-	-	-\$1,200.00	-\$1,200.00	\$1,200.00
G) Departmental Requests	-	-	-	-	-\$15,900.00	-\$15,900.00	\$15,900.00
H) RECURRING PROGRAMS	-	-\$800.00	-\$800.00	-	-\$32,220.00	-\$32,220.00	\$31,420.00
I) PRIOR YEAR EXPENSES	-	-	-	-	-\$2,900.00	-\$2,900.00	\$2,900.00
J) DESIGNATED FUNDS	-	-	-	-	-	-	-
K) SCHOLARSHIPS	-	-\$2,000.00	-\$2,000.00	-	-\$2,000.00	-\$2,000.00	-
Total	-	-\$4,080.65	-\$4,080.65	\$86,000.00	-\$86,000.00	-	-\$4,080.65

<https://isptsa.org/Doc/Documents 2020-21/ISPTSA Budget Report October-2020.pdf>

ISPTSA SURVEY SUMMARY — KEY TAKEAWAYS

- 93% members or planning to become members -
 - Did not remember most common reason
- 86% attended PTSA events - Most Useful events
 - Middle/High School Socials, Grade Level Parents nights
 - High School Retreat, Staff Appreciation, Bite of IS
- Interest in Virtual Events
 - Grade Level Parents Nights - PTSA General Assembly - Parent Coffee
- Interest in in-Person Events
 - Grade Level Parents Nights, PTSA General Assembly, Spring Social, Middle/High socials, Staff Appreciation
- Best Use of PTSA Budget
 - Staff Appreciation, Community/Clubs, Dept. Support (Science), Dept. Support (Math, Art)

MEMBERSHIP UPDATE — MERIBETH NORDLOEF-PEDERSEN

Tired of the election mantra's... But wait.. WE NEED YOU is still valid.

We have 37% memberships at this time. We need over 350 more members to meet our goal of 586. **Last year at this time, we had 456 members... Truly.**

Quick Facts:

- Did you know you need to renew each year?
- The state PTA uses our membership numbers to help leverage important bills affecting our students.
- We were the only HS in the state of WA to get 100% membership.
- Let's do it to support each and every student.

FUNDRAISING UPDATE — EMILIE CASTLE

- Raise the Torch - Fall Fundraiser
- Spring Fundraiser



COMMUNITY UPDATE - MELISSA RICHARDSON



Share ideas to help build community at IS! Email Melissa @ sam_mel@yahoo.com

Volunteer to be a Grade-Level Representative! We need you!

GRADE-LEVEL VIRTUAL MEET-UPS!

Grade Level	Date
6 th Grade	Thursday, Nov. 5th @ 12pm-1pm
12 th Grade	Friday, Nov. 6th @ 12pm-1pm
7 th Grade	Monday, Nov. 9th @ 12pm-1pm
8 th Grade	Monday, Nov. 9th @ 7pm – 8pm
9 th Grade	Tuesday, Nov. 10th @ 12pm-1pm
10 th Grade	Tuesday, Nov. 10th @ 7pm – 8pm
11 th Grade	Thursday, Nov. 12th @ 12pm – 1pm

UPCOMING EVENTS!

Event	Date
IS Spirit Wear Online Store	TBD via Winners SportsWear
Virtual Workshop (MS Students): Student Advocacy Intro: How to Advocate During Remote Learning (w/ Student Advocacy Solutions)	Tuesday, November 10 th 6:30pm – 7:30pm
Reach Out! Parent “Night Out”	Wednesday, Nov. 18@ 7pm
ACT/SAT Online Practice Test	Saturday, Nov. 21 - tentative
ACT/SAT Online Practice Test	Saturday, Feb. TBD



International School Community – Bellevue, WA
International School PTSA
Check for “Class of” FB groups

THE BELLEVUE SCHOOLS FOUNDATION WILL RAISE \$1.9M FOR OUR SCHOOLS THIS YEAR

Carmen Brenner

BSF exists because public funding does not provide sufficient resources for the schooling our children deserve.

This year, at the secondary level, BSF funding will support:

- Emergency services for children and youth impacted by COVID
- Counselors to help students at the secondary level deal with stress, depression and anxiety through remote counseling
- Arts and Music funding
- Racial equity training and National Board Certification for teachers
- And much more!

Donate now at BellevueSchoolsFoundation.org

NEXT STEPS

Step forward to serve on the ISPTSA Board and Committees

- Email: board@isptsa.org with your interest

Monthly Virtual Principal Coffee

- First Thursday of every month – alternating morning and evening
- Submit questions through survey announced through Monday Messenger
- See you on November 5th, at 7:00pm

YOUR PTSA

VISIT THE WEBSITE

ISPTSA.ORG